

# VA50E/51

Line Scan Vision Appliance



VA50E/51

### Key Features

- Cost-effective multi-camera solution
- Choice of camera type and resolution
- Powerful embedded processor ensures fast inspection times
- Rugged system for online or offline inspection
- Universal solution for end users, integrators and machine builders

### Vision Capabilities

- Positioning
- Identification
- Verification
- Measurement
- Flaw Detection

### Overview

## Line Scan Vision Appliances

DALSA's VA5X Vision Appliances are compact machine vision controllers for automated optical inspections that use line scan camera technology. These products have been designed for applications requiring cylindrical unwrapping of parts or large format imaging of moving surfaces.

Multiple camera inputs provide cost efficiency and easier integration for applications that need to perform simultaneous inspection on more than one part or process. The VA5X products support a range of camera resolutions from 1024 to 8096 pixels and provide synchronization timing between the cameras and the moving part or surface

Communication options include standard serial and Ethernet interfaces for communicating with complementary devices or connecting into the factory network.

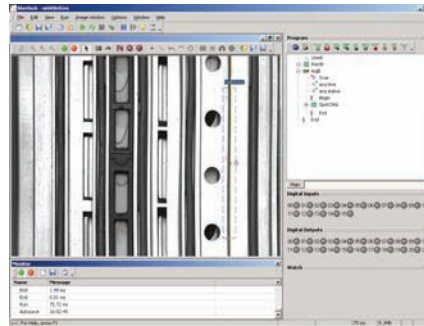
Specifications	VA50E	VA51
Program Memory	512 MB	1024 MB
Storage Memory	80 GB	80 GB
# Cameras	2 line scan	2 line scan
Camera Interface	Camera Link	Camera Link
Communication		
- Ethernet	10/100	10/100/1000
- USB	2 (2.0)	2 (2.0)
- Serial	RS-232	RS-232
- Visual	7 LEDs	7 LEDs
I/O	24V 12in/8out	24V 12in/8out
User Interface	Sherlock	Sherlock
Mono/Color Processing	Mono or Color	Mono or Color
Power	24V @ 2.5A	24V @ 2.5A
Operating	0-40°C ambient, 5-90% humidity	0-45°C ambient, 5-90% humidity
Dimensions	7.6 x 20 x 21.5 cm	7.6 x 20 x 21.5 cm
Approvals	CE	CE

# VA50E/51

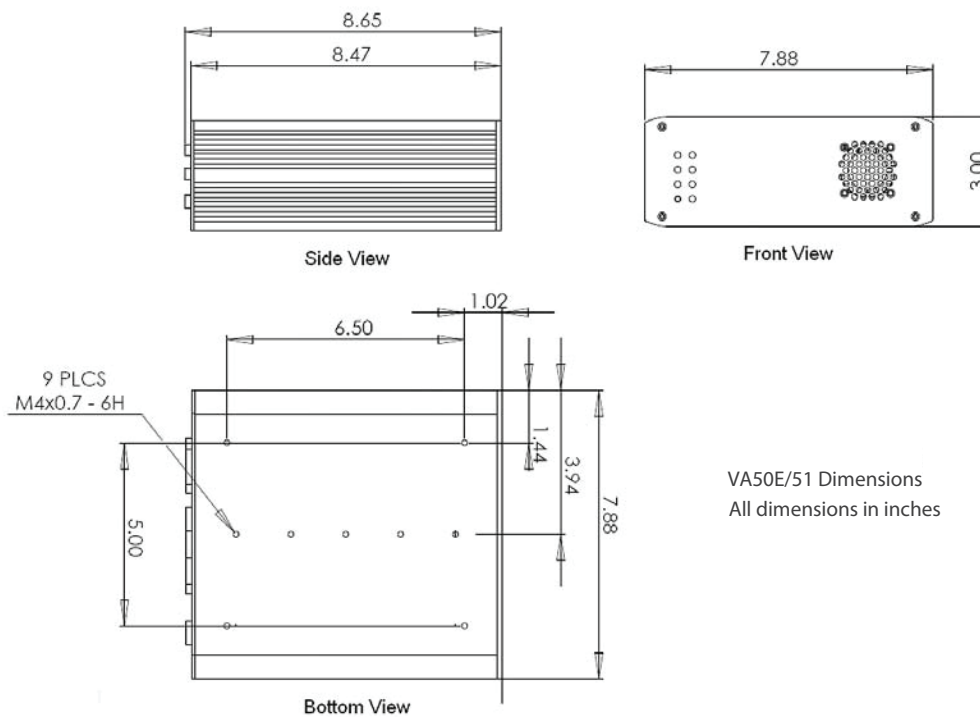
Line Scan Vision Appliance

The VA5X is pre-loaded with our distinct application interface, Sherlock. This windows-based graphical design environment provides a comprehensive suite of tools and capabilities to satisfy a variety of applications and industries.

Sherlock supports standard factory protocols, such as Modbus and Ethernet/IP, for connecting with complementary equipment.



Designed for All Users  
 Sherlock software offers experienced integrators flexibility and advanced capabilities to tackle the most demanding applications.  
 Sherlock has been deployed in thousands of applications worldwide.



Step Solutions Co.,Ltd.

74/1 Soi Ramkhumhang 180 Rd, Minburi, Minburi Bangkok 10510

Tel : 0-2976-9101 Fax 0-2976-9105

[www.step-solutions.com](http://www.step-solutions.com), [www.digitalsignagethai.com](http://www.digitalsignagethai.com)

